

TAH

Eye Bolt Type Single Filter Cartridge Housing

Design P.	150psi
Design T.	100°C
Max Operating P.	150psi
Operating T.	75°C



Features

1. Easy installation with single filter cartridge housing.
2. Available with swing bolt closure for faster cartridge change-outs.
3. One well design pedestal is available with both DOE and SOE cartridge specification.



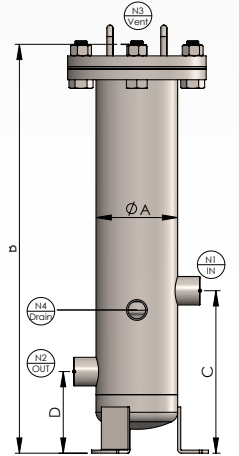
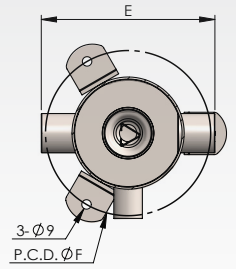
Applications

Chemicals	RO Pre-filtration process
Petrochemical	Water filtration
Beverage Industry	Pharmaceutical
Liquor manufacture	Experiment Process
Food industry	Gas Filter
Electroplating Industry	Sewage treatment
High temperature manufacturing processes	Electronic Industry



TAH Ordering Guide

TAH	1	4	F	1	PF	E	EA
Model	Length	Material	Adapters	Connection Size	Connection Type	O-ring	Outside / Inside Finishing
TAH	1-10" 2-20" 3-30"	4-304 6-316 6L-316L	F-DOE 5-222 7-226	21-1/2" 43-3/4" 1-1" 121-1-1/2" 2-2"	150P-ANSI 10K-JIS PN10-DIN C-CLAMP PF-PTF NF-NPTF PM-PTM NM-NPTM	E-EPDM N-NBR V-VITON S-Silicon	A-Acid-pickling E-Electropolishing P-Polishing



TAH Specifications

Model	Length of Cartridge	A m/m	B m/m	C m/m	D m/m	E m/m	F(PCD) m/m	M3/Hr	GPM	Weight
TAH1	10"	Ø106	536	210	105	165	Ø156	1	5	12.5kg
TAH2	20"	Ø106	786	210	105	165	Ø156	2	10	16kg
TAH3	30"	Ø106	1036	210	105	165	Ø156	3	15	19.5kg