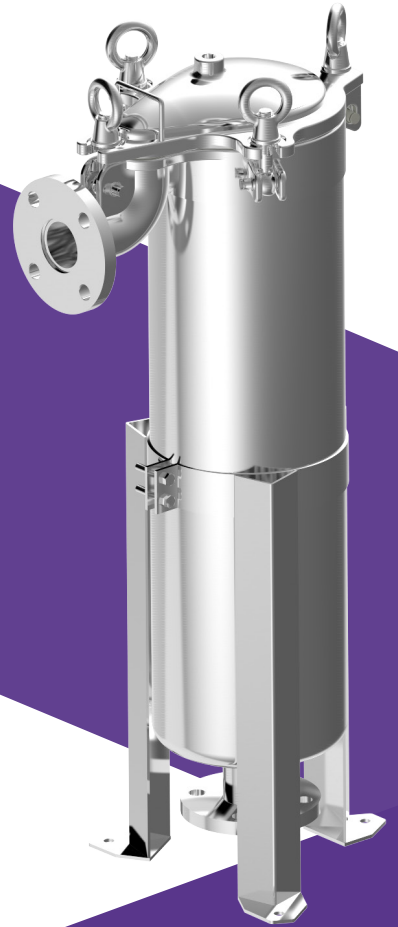


KU

Top Loading Single Filter Bag Housing (Bag No.1-No.2)

Design P.	150psi
Design T.	100°C
Max Operating P.	150psi
Operating T.	75°C



Features

1. Single bag filter with adjustable support leg for simplified installation.
2. Swing-bolt type allows for tightly closure and easy installation without tool.
3. Well O-ring groove design improves sealing and prevents loosening.
4. Opening angle of 105 degree for easy and space-saving bag filter change-outs.
6. The Patented top cover design allows a faster and safer closure.



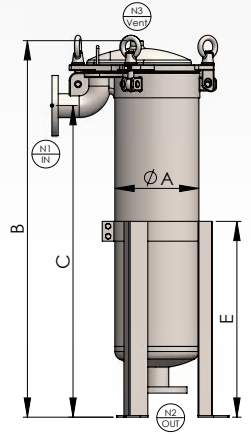
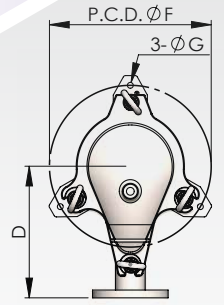
Applications

Chemicals	RO Pre-filtration process
Petrochemical	Water filtration
Beverage Industry	Pharmaceutical
Liquor manufacture	Experiment Process
Food industry	Gas Filter
Electroplating Industry	Sewage treatment
High temperature manufacturing processes	Electronic Industry



KU Ordering Guide

KU	2	4	SB	2	10K	E	EA
Model	Bag Size	Material	Connction	Connection Size	Connection Type	O-ring	Outside / Inside Finishes
KU	1-Bag No.1 2-Bag No.2	4-304 6-316 6L-316L	Side In & Side Out Side In & Bottom Out	21-1/2" 43-3/4" 1-1" 121-1-1/2" 2-2" 221-2-1/2" 3-3"	150P-ANSI 10K-JIS PN10-DIN C-CLAMP PF-PTF NF-NPTF PM-PTM NM-NPTM	E-EPDM N-NBR V-VITON S-Silicon T-Teflon +Silicon	A-Acid-pickling E-Electropolishing P-Polishing S-Sand Blasting



KU Specifications

Model	A m/m	B m/m	C m/m	D m/m	E m/m	F (PCD) m/m	G m/m	M3/Hr	GPM	Weight	Volume
KU1	Ø216	555	390	270	515	Ø310	Ø12	20	90	40kg	16L
KU2	Ø216	905	740	270	515	Ø310	Ø12	45	200	48kg	31L