

TJ

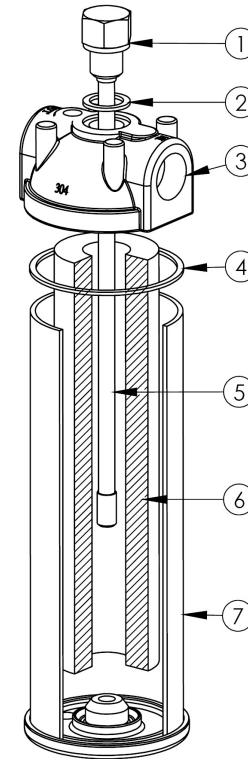
單支式濾心機 (鎖牙式) Bolt Type Single Cartridge Housing



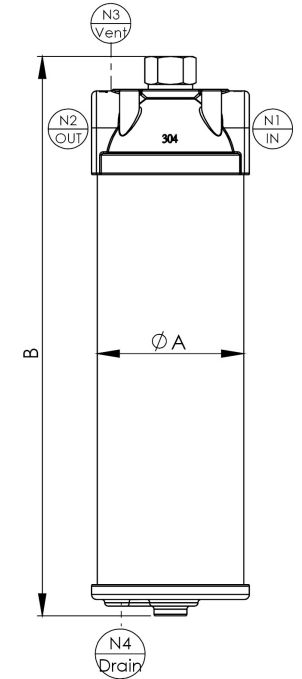
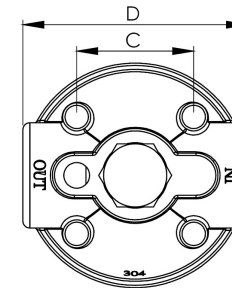
設計壓力 Design P.	10 kgf/cm ² 150 psi	最大操作壓力 Operating P.	10 kgf/cm ² 150 psi
設計溫度 Design T.	100°C	操作溫度 Operating T.	75°C
選購配件 Accessory	各式濾芯、吊片 Cartridges, Mounting bracket		



TJ	1	4	F	1	PF	E	BA
產品型號 Model	濾心長度 Length	產品材質 Material	濾心接頭 Adapters	進出口尺寸 Connection Size	進出口規格 Connection Type	O 環材質 O-ring	外 / 內表面處理 Outside & Inside Finishes
TJ	1-10" 2-20" 3-30"	4-304 6-316 6L-316L	F-DOE	43-3/4" 1-1"	150P-ANSI 10K-JIS PN10-DIN C-CLAMP PF-PT/BSPT/Rc (Female) NF-NPT (Female)	E-EPDM N-NBR V-VITON S-SILICON	A- 酸洗 Acid Pickling E- 電解 Electropolishing B- 研磨 Burnishing



No.	名稱	Description
1	濾心螺母	Nut
2	墊片	Gasket
3	集水頭	Cap
4	墊片	Gasket
5	牙條	Screw rod
6	濾心	Cartridge
7	桶身	Shell



型式 Model	濾心長度 Length	N1/N2	N3/N4	A m/m	B m/m	C m/m	D m/m	流量 M ³ /Hr	流量 (加侖) GPM
TJ1	10"	3/4"~1"	1/4"	Ø89.1	340	96	50	1	4
TJ2	20"	3/4"~1"	1/4"	Ø89.1	595	96	50	2	9
TJ3	30"	3/4"~1"	1/4"	Ø89.1	850	96	50	3	13