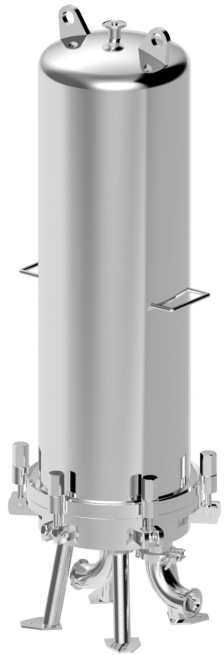
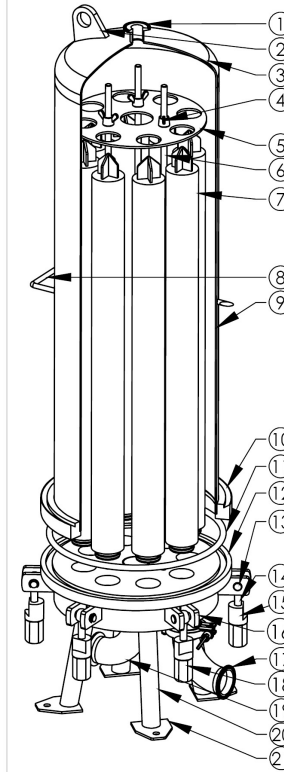


SM

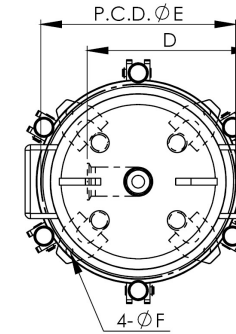
多支衛生級過濾器 (螺絲式) Sanitary Multi Filter Cartridge Housing (Screw Type)



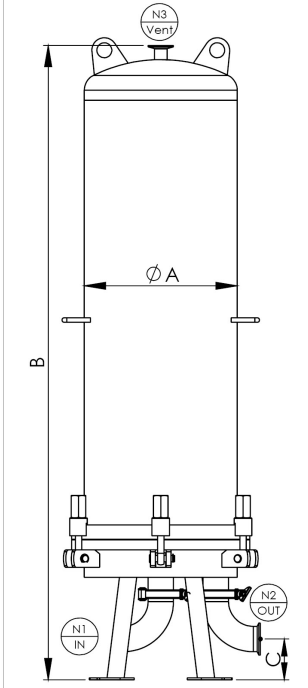
設計壓力 Design P.	10 kgf/cm ² 150 psi	最大操作壓力 Max Operating P.	10 kgf/cm ² 150 psi
設計溫度 Design T.	100°C	操作溫度 Operating T.	75°C
選購配件 Accessory	各式濾芯 Cartridges		



No.	名稱	Description
1	排氣口	Vent
2	吊耳	Lifting lug
3	端板	Top cover
4	壓板螺母	Nut
5	壓板	Pressure plate
6	雙頭牙條	Threaded rod
7	濾芯	Filter cartridge
8	把手	Handle
9	桶體	Shell
10	桶蓋	Shell flange
11	O型環	O-ring
12	底座	Base
13	心軸	Spindle
14	臺眼螺絲	Eye bolt
15	扣座	Padlock
16	臺眼螺絲座	Eye bolt socket
17	出水口	Outlet
18	杯型螺帽	Nut
19	入水口	Inlet



No.	名稱	Description
20	腳架	Support leg
21	腳墊板	Leg base plate



SM	10	3	4	5	2	C	S	PP
產品型號 Model	濾心支數 No. of Filter Cartridge	濾心長度 Length	產品材質 Material	濾心接頭 Adapters	進出口尺寸 Connection Size	進出口規格 Connection Type	O 環材質 O-ring	外 / 內表面處理 Outside & Inside Finishes
SM	2~40	3-30" 4-40"	4-304 6-316 6L-316L	F-DOE 5-222 7-226	1-1" 121-1-1/2" 2-2" 221-2-1/2" 3-3" 4-4"	150P-ANSI 10K-JIS PN10-DIN C-CLAMP PF-PT/BSPT/Rc (Female) PM-PT/BSPT/R (Male) NF-NPT (Female) NM-NPT (Male) BF-BSPF/G (Female) BM-BSPF/G (Male)	E-EPDM N-NBR V-VITON S-SILICON TS-TEFLON+SILICON	E- 電解 Electropolishing P- 拋光 Polishing

型式 Model	濾心長度 Length	N1/N2	N3	A m/m	B m/m	C m/m	D m/m	E(PCD) m/m	F m/m	流量 M ³ /Hr	流量 (加侖) GPM
SM2-6	30"	2"	1"	Ø232	1204	120	284	Ø281	Ø14	6~18	26~79
SM7-8	30"	2"	1"	Ø306	1314	120	288	Ø340	Ø14	21~24	92~106
SM9~11	30"	2"	1"	Ø350	1326	120	288	Ø385	Ø14	27~33	119~145
SM12~18	30"	2"	1"	Ø406	1334	120	288	Ø440	Ø14	36~54	159~238
SM19~26	30"	2"	1"	Ø508	1358	120	288	Ø542	Ø14	57~78	251~343
SM27~40	30"	2"	1"	Ø560	1369	120	288	Ø605	Ø14	81~120	357~528