

RL4

4"RO 管件 RO Membrane Housing



設計壓力 20 kgf/cm² 最大操作壓力 20 kgf/cm²
Design P. 300 psi Max Operating P. 300 psi

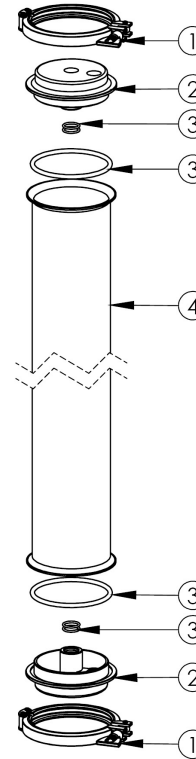
設計溫度 100°C 操作溫度 75°C
Design T. Operating T.

端板材質 SUS304, SUS316
Ro Head Material

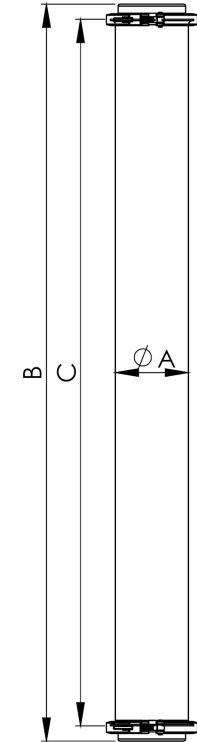
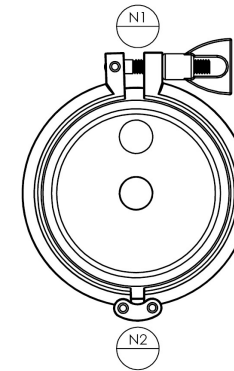
選購配件 一體式、二片式
Accessory One piece casted clamp
Two piece clamp



RL4	4	B	4	N	21	PF	21	PF	N	BA
產品型號	管身尺寸	束環樣式	管身材質	端板材質	N1 尺寸	N1 規格	N2 尺寸	N2 規格	O 環材質	外 / 內表面處理
Model	Length	Clamp Type	Shell Material	Ro Head Material	N1 Size	N1 Type	N2 Size	N2 Type	O-ring	Outside & Inside Finishes
RL4	2-21" 4-40" 8-80" 12-120"	A- 一體式 One Piece B- 二片式 Two Pieces	4-304 6-316	4-304 6-316 N-Nylon	21-1/2" 43-3/4"	PF-PT/ BSPT/Rc (Female) NF-NPT (Female)	21-1/2" 43-3/4"	PF-PT/ BSPT/Rc (Female) NF-NPT (Female)	E-EPDM N-NBR V-VITON	A- 酸洗 Acid pickling B- 研磨 Burnishing P- 拋光 Polishing



No.	名稱	Description
1	束環	Clamp
2	RO 端板	RO head
3	O 型環	O-ring
4	管殼	Shell
5	管殼	Shell



型式 Model	N1	N2	A m/m	B m/m	C m/m
RL4-2	1/2" or 3/4"	1/2" or 3/4"	Ø106	539	545
RL4-4	1/2" or 3/4"	1/2" or 3/4"	Ø106	1073	1025
RL4-8	1/2" or 3/4"	1/2" or 3/4"	Ø106	2088	2040
RL4-12	1/2" or 3/4"	1/2" or 3/4"	Ø106	3103	3055