

RL4

4"RO 管件 RO Membrane Housing



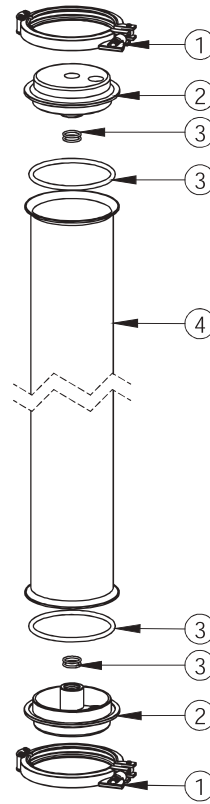
設計壓力 Design P.	20 kgf/cm ² 300 psi	最大操作壓力 Max Operating P.	20 kgf/cm ² 300 psi
設計溫度 Design T.	100°C	操作溫度 Operating T.	75°C

端板材質 Ro Head Material	SUS304, SUS316
--------------------------	----------------

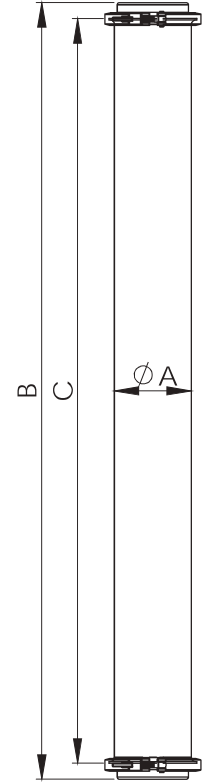
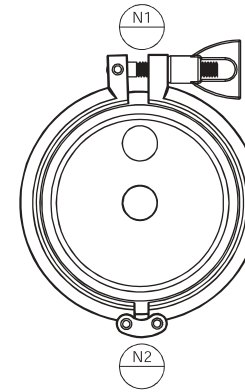
選購配件 Accessory	一體式、二片式 One piece casted clamp Two piece clamp
-------------------	--



RL4	4	B	4	N	21	PF	21	PF	N	BA
產品型號 Model	管身尺寸 Length	束環樣式 Clamp Type	管身材質 Shell Material	端板材質 Ro Head Material	N1 尺寸 N1 Size	N1 規格 N1 Type	N2 尺寸 N2 Size	N2 規格 N2 Type	O 環材質 O-ring	外 / 內表面處理 Outside & Inside Finishes
RL4	2-21" 4-40" 8-80" 12-120"	A- 一體式 One Piece B- 二片式 Two Pieces	4-304 6-316	4-304 6-316 N-Nylon	21-1/2" 43-3/4"	PF-PT/ BSPT/Rc (Female) NF-NPT (Female)	21-1/2" 43-3/4"	PF-PT/ BSPT/Rc (Female) NF-NPT (Female)	E-EPDM N-NBR V-VITON	A- 酸洗 Acid pickling B- 研磨 Burnishing P- 拋光 Polishing



No.	名稱	Description
1	束環	Clamp
2	RO 端板	RO head
3	O 型環	O-ring
4	管殼	Shell
5	管殼	Shell



型式 Model	N1	N2	A m/m	B m/m	C m/m
RL4-2	1/2" or 3/4"	1/2" or 3/4"	Ø106	539	545
RL4-4	1/2" or 3/4"	1/2" or 3/4"	Ø106	1073	1025
RL4-8	1/2" or 3/4"	1/2" or 3/4"	Ø106	2088	2040
RL4-12	1/2" or 3/4"	1/2" or 3/4"	Ø106	3103	3055